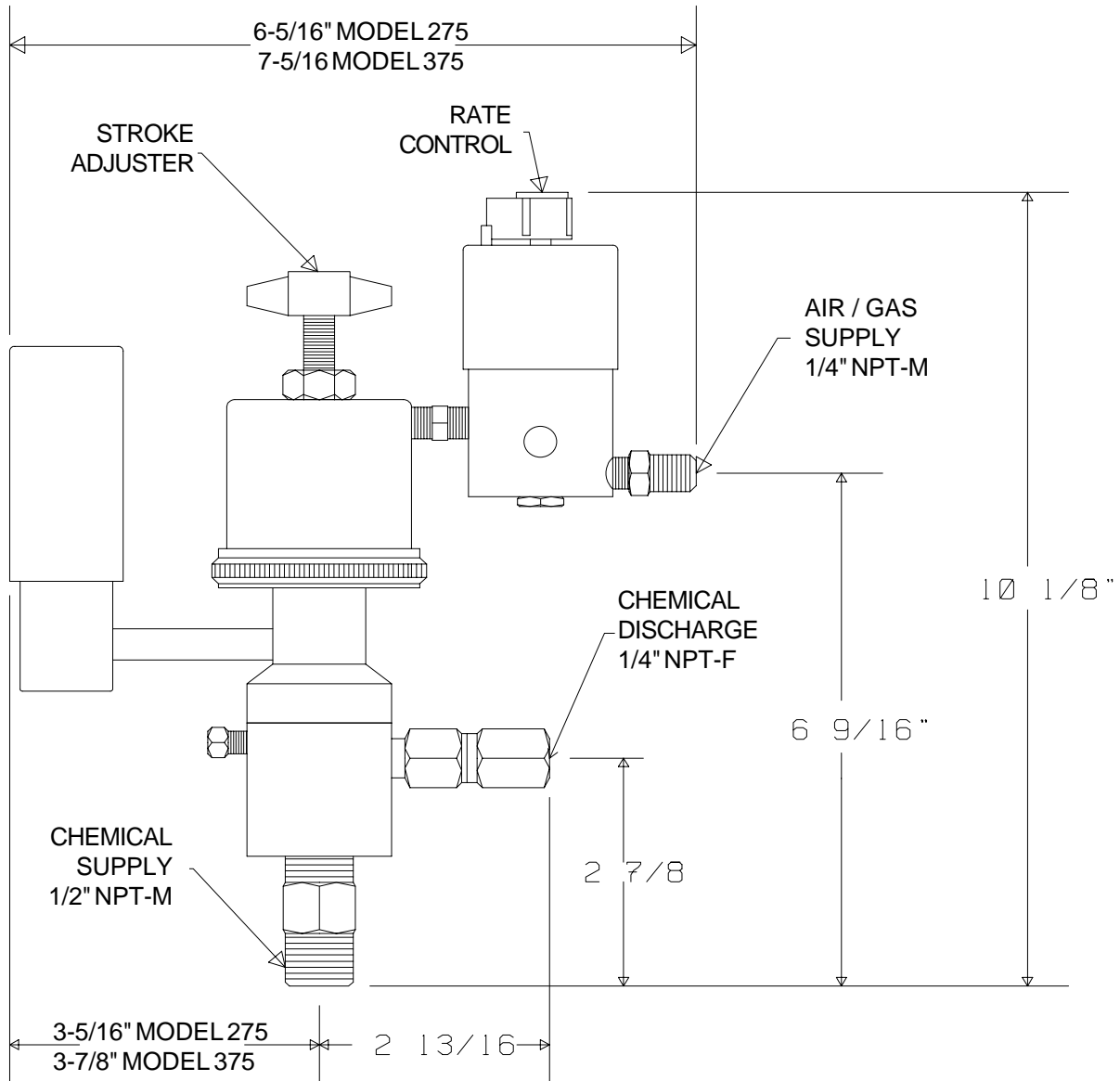


# MORGAN PRODUCTS

PNEUMATIC CHEMICAL PUMPS FOR THE GAS AND OIL INDUSTRIES

## MODEL 275-TR2 / 375-TR2

AIR ACTUATED POSITIVE DISPLACEMENT PUMP



MODEL (WITH TIMER)	DISPLACEMENT	PUMP RATIO	STROKE LENGTH in. - cm.	CONNECTIONS ALL NPT INPUT / OUTPUT	MAXIMUM DISCHARGE PSI - BAR	OUTPUT PER HOUR GAL. / LTS.
275-TR2	3.2cc	17:1	1 - 2.54	1/2 - M / 1/4 - F	2550 - 175	.25 - 2.5 / .95 - 9.5
375-TR2	3.2cc	31:1	1 - 2.54	1/2 - M / 1/4 - F	4650 - 320	.25 - 2.5 / .95 - 9.5

**MORGAN PRODUCTS INC.** 28103 Ave. Stanford / Valencia, CA 91355

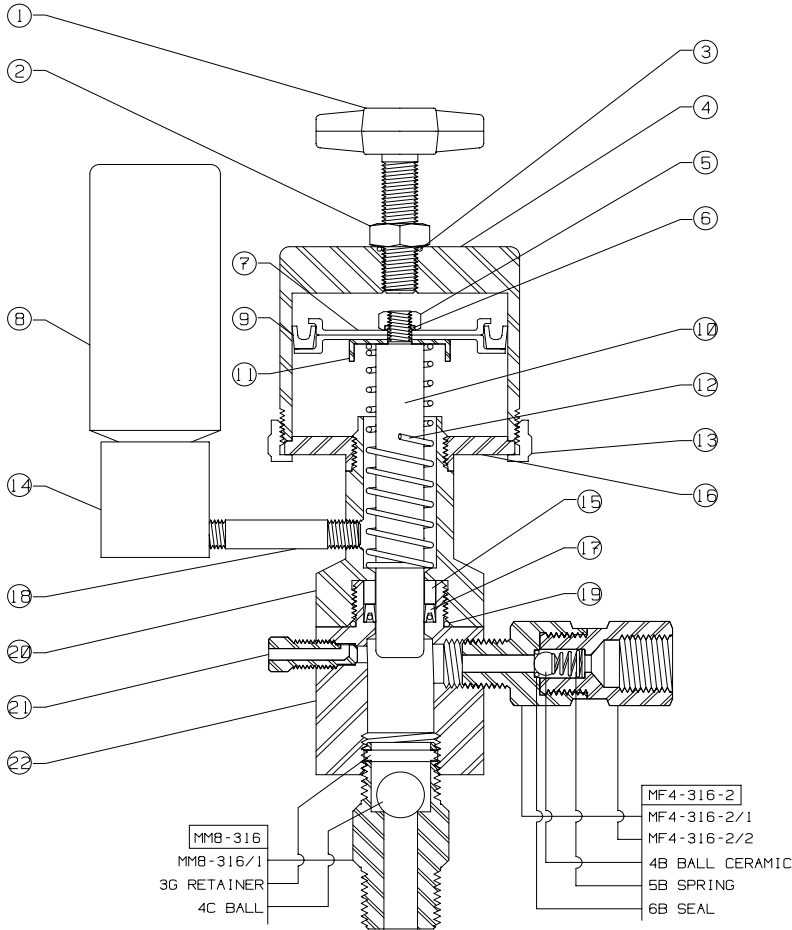
(805) 257-3022 - (800) 421-8910 - FAX (805) 257-3385

www.morganproducts.com - E-Mail info@morganproducts.com

# MORGAN PRODUCTS

PNEUMATIC CHEMICAL PUMPS FOR THE GAS AND OIL INDUSTRIES

## Parts List Model 275, 375, 475

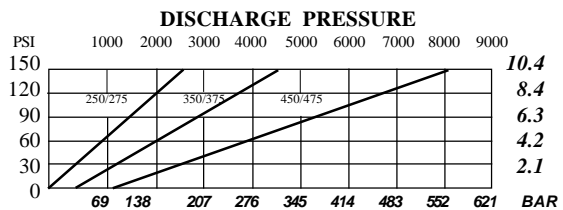
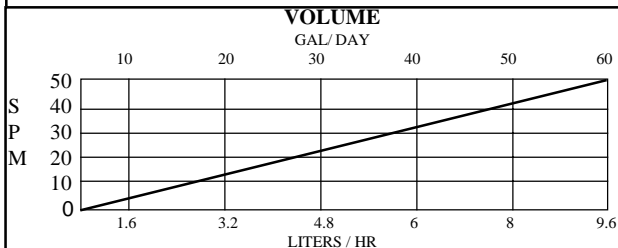


NO	NAME	PART NO.	PUMP MODEL
1	Stroke Adjuster	100-1	ALL
2	Locknut	100-2	ALL
3	O-Ring Seal	100-3	* ALL
4	Air Chambers	200-4 300-4 400-4	250/275 350/375 450/475
5	Piston Locknut	100-7	ALL
6	O-Ring Seal	100-11	* ALL
7	Pistons	200-8 300-8 400-8	250/275 350/375 450/475
8	2 oz. Oil	100-24	ALL
9	Piston Seals	200-9 300-9 400-9	* 250/275 * 350/375 * 450/475
10	Plungers:		
	17-4 TN	250-15	* ALL
	316 SS	275-17	Optional
	Carpenter 20	250-18	Optional
11	Not Used		
12	Return Spring	250-13	* ALL
13	Air Chamber Rings	200-5 300-5 400-5	250/275 350/375 450/475
14	Reservoir	100-25	ALL
15	Back Up Ring	250-19	* ALL
16	Faceplates	200-6 300-6 400-6	250/275 350/375 450/475
17	Pressure Seals:		
	TG	250-20	* ALL
	Buna- N	250-20B	Optional
	Viton	250-20V	Optional
	Fluoraz	250-20F	Optional
18	Nipples	200-32 300-32 400-32	250/275 350/375 450/475
19	O-Ring Seal	100-21	* ALL
20	Oil Chamber	250-14	ALL
21	Bleeder Plugs	125-22	ALL
22	Fluid Chambers	275-23	ALL
N/S	Elbow	4000-27	450/475
N/S	1/4-20 Cap Screw	4000-28	(2) 450/475
N/S	1/4 Washer	4000-29	(2) 450/475
N/S	1 oz. Grease		* ALL
	Repair Kits:		
	17-4 TN Plunger	250-50	250/275
		350-50	350/375
		450-50	450/475
	316 SS Plunger	275-50	250/275
		375-50	350/375
		475-50	450/475
	Seal Sets:		
	TG	250-48	ALL
	Buna- N	250-48B	ALL
	Viton	250-48V	ALL
	Fluoraz	250-48F	ALL

\* = Included in Repair Kit

### INSTALLATION INSTRUCTIONS

1. Discard all red plastic closures.
2. Connect suction check valve, to a gravity fed chemical source.
3. Connect discharge check valve, to process line.
4. Connect a regulated air or gas supply, to the timing relay.
5. Fill oil reservoir with oil provided.  
\*\* This must be done BEFORE start up.\*\*
6. Open bleeder valve until chemical flows from bleeder.
7. Set regulator at 10 to 15 psi ABOVE the pressure required.



MORGAN PRODUCTS INC. 28103 Ave. Stanford / Valencia, CA 91355

(805) 257-3022 - (800) 421-8910 - FAX (805) 257-3385